

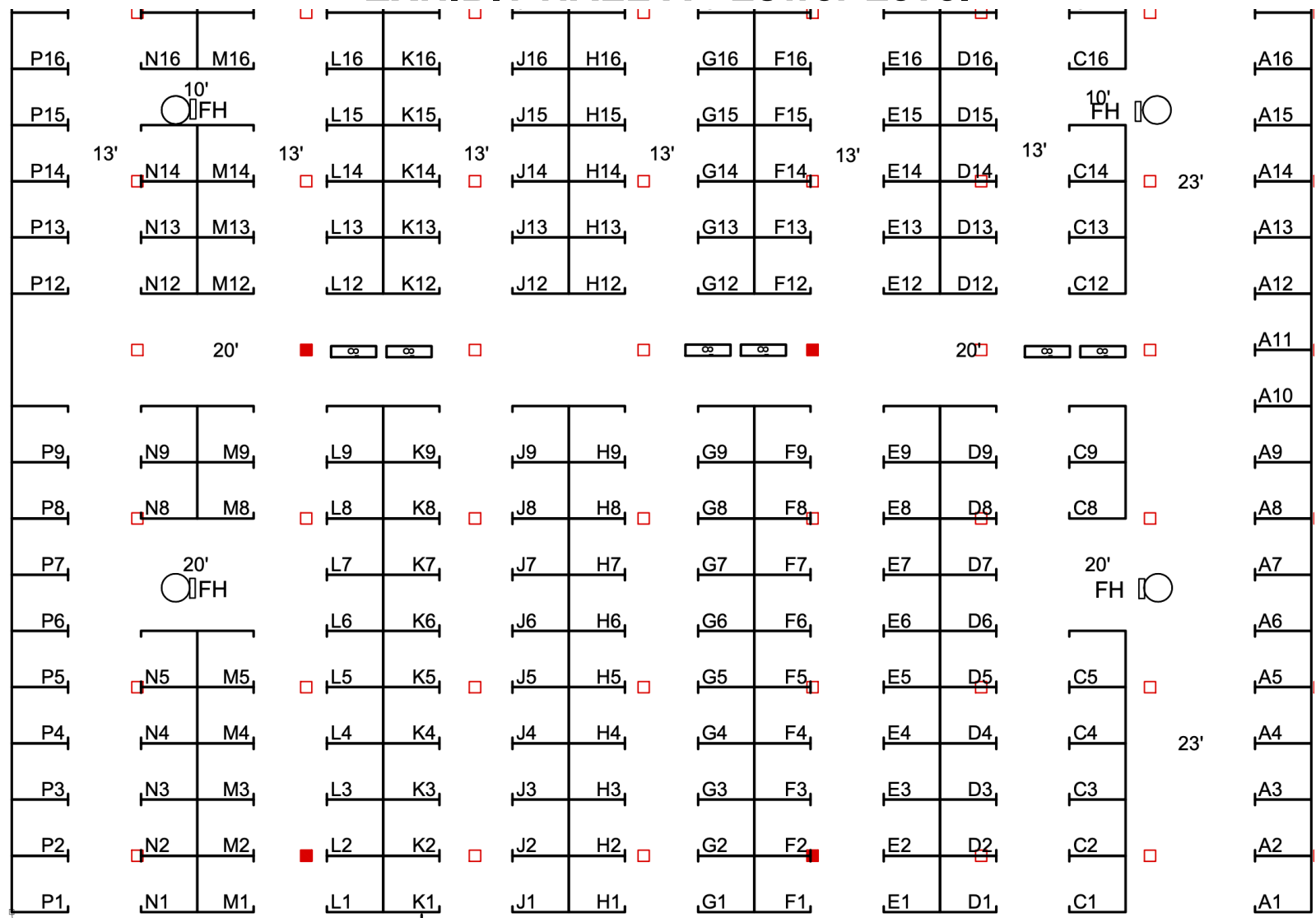
# Job Fair Areas

**Wednesday,  
February 19, 2025  
9 AM – 2 PM**

-Employer Booths  
-International Candidate  
Lawyer Table

-Student Lounge  
-Student Check In  
-Student Coat Check

## EXHIBIT HALL A - Lower Level



International Candidate Lawyer



**ENTRANCE**



[www.mnpcfair.org](http://www.mnpcfair.org)

**WELCOME TO THE 2025  
MINNESOTA PRIVATE COLLEGES'  
JOB & INTERNSHIP FAIR**



View the booth assignments and map on your mobile device! Scan the QR code on the left, or visit [www.mnpcfair.org/booths](http://www.mnpcfair.org/booths)

View the list of employers by industry on your mobile device! Scan the QR code on the right, or visit [www.mnpcfair.org/organizations-at-the-fair](http://www.mnpcfair.org/organizations-at-the-fair)

**Connect to 'Private Colleges WiFi'**



**@mnprivcolleges**

**#mnprivcolleges**



Booth#	Organization Name
M4	Abdo
A1-2	ACR Homes/ACR Healthcare (OPT/CPT)
M8	Aldi
H9	Allianz Life
L7	American Academy of Neurology
J2	Ameriprise Financial
K12	Anderson Trucking Service, Inc
L12	Anoka County
H14	Archcraft Exteriors (VISA) (OPT/CPT)
E1	Auto-Owners Insurance Company
A10	Barton Walter Krier PC (OPT/CPT)
A3	Bennerotte & Associates, P.A. (OPT/CPT)
C1	BGM CPAs & Wealth Partners
M2	Blue Cross and Blue Shield of Minnesota
D4	Boulay
F1	Boyum Barendscheer
L2	Breakthrough Minneapolis at Blake
E16	Canterbury Park
L4	Caravel Autism Health
P6	CED (Consolidated Electrical Distributors)
C9	Centennial School District ISD 12
D9	Cintas
N9	City of Minnetonka
D15	CLA (CliftonLarsonAllen)
A14-15	Classic Construction & Consulting
K9	Clear Cut Xteriors
C3	College Possible
H8	Colorado Vincentian Volunteers
J5	Crew
L9	Dakota County, MN (OPT/CPT)
D2	Dayton Freight Lines
K4	Delta Dental of Minnesota
D5	Dev10
P8	Diasorin Inc
J4	Digital Mass
N8	Dungarvin Minnesota (OPT/CPT)
N4	EisnerAmper
N5	Emergency Care Consultants
J14	Enriching Home Care Services (VISA) (OPT/CPT)
F9	Enterprise Mobility
D12	Epic
K7	Equitable Advisors
G1	Essentia Health
A11	Evans Transportation Services (OPT/CPT)
L13	EVEREVE
M5	Evergreen Construction Company, Inc (VISA) (OPT/CPT)
N2	Everlight Solar
M3	Fast Enterprises
E8	Federal Air Marshal Service
H7	Federated Insurance
M13	Fraser
C13	Froehling Anderson
K14	FRSecure
H13	Fund for the Public Interest (OPT/CPT)
C16	GCS Geospatial
D3	Gillette Children's
D13	Goodhue County Education District
G12	Gradient Financial Group
N13	Green Corps (OPT/CPT)
M9	GreenGuard Construction Inc.
L6	Guy Carpenter
H15	Hennepin EM Research & Quality Improvement Program (OPT/CPT)
P13	Hospital Pathology Associates (VISA)
A6	Howden Re (VISA) (OPT/CPT)
A7	IDeaS (OPT/CPT)
K6	Jesuit Volunteer Corps/Jesuit Volunteer Corps Northwest (OPT/CPT)
L5	Legacy Professionals LLP - Certified Public Accountants
K15	Liberte Construction (OPT/CPT)
F8	Life Time
G2	Literacy Minnesota
G9	Lockton
E13	Lutheran Social Service of Minnesota (OPT/CPT)
D6	Mahoney   CPAs and Advisors (VISA) (OPT/CPT)
G3	Mediacom Communications Corp
K8	MEDITECH
L3	Merchology (OPT/CPT)
H3	Metropolitan Mosquito Control District
G6	Minneapolis Park and Recreation Board (VISA) (OPT/CPT)
L1	Minnesota Alliance With Youth
C14	Minnesota Behavioral Specialists (OPT/CPT)
F7	Minnesota Department of Human Services (OPT/CPT)
F4	Minnesota Department of Revenue
E3	Minnesota Department of Transportation (VISA) (OPT/CPT)
F13	Minnesota Government Finance Officers Association (OPT/CPT)

Booth#	Organization Name
F6	Minnesota GreenCorps
E6	Minnesota Historical Society (VISA) (OPT/CPT)
E2	Minnesota Judicial Branch (OPT/CPT)
E7	Minnesota Lottery
M1	Minnesota National Guard
F5	Minnesota Pollution Control Agency
L8	Minnesota Public Radio
F2	Minnesota Sex Offender Program
E4	Minnesota State Board of Investment (VISA) (OPT/CPT)
E5	Minnesota State Fair (OPT/CPT)
F3	Minnesota State Patrol
M12	Minnesota Valley Electric Cooperative (OPT/CPT)
J13	MNGI Digestive Health
H6	Move for America
F12	Nexus Family Healing
H1	NMDP (OPT/CPT)
F15	North Star Resource Group
L15	Northern Pines Mental Health Center
A13	Northmarq
D8	Northwestern Mutual - Twin Cities (OPT/CPT)
A8	Northwestern Mutual Minneapolis
L14	Nystrom & Associates (OPT/CPT)
C8	Olmsted County (OPT/CPT)
A12	Olsen Thielen & Co., Ltd
D16	Osprey Wilds ELC (OPT/CPT)
J1	Osseo Area Schools
D14	Ovative Group
M14	Pace Analytical (OPT/CPT)
H5	Partners In Excellence (OPT/CPT)
K13	Patterson Companies
D7	People Incorporated Mental Health Services (OPT/CPT)
K1	Premier Banks
J3	Prodeo Academy
J7	Project Video (VISA) (OPT/CPT)
P5	Quaker Voluntary Service (OPT/CPT)
N1	RADIAS Health (OPT/CPT)
C2	Reading Partners
G8	RELCO, LLC
E14	Rise, INC
K5	Robert Half (VISA) (OPT/CPT)
K2	RSM US LLP
G7	SciTech (OPT/CPT)
K3	Securian Financial
P1	SFM
P4	Shakir Consulting Services LLC (VISA) (OPT/CPT)
A4	Sherwin Williams
J6	Smart Data Solutions
H4	Smith Schafer and Associates
E15	Southern Valley Alliance (OPT/CPT)
G16	Spero Academy
G13	SpringPath Mental Health Services (OPT/CPT)
J9	SPS Commerce
N12	St David's Center
G4	SteppingStone – Stella
J8	Summit Orthopedics
P2	Supply Chain Solutions
P9	Tactile Medical
P15	Taylor Corporation (VISA) (OPT/CPT)
C5	Teach For America
E12	The Bridge Autism Clinic (VISA) (OPT/CPT)
G5	The City of Minneapolis Public Works (VISA) (OPT/CPT)
N14	The Perfect Pair Agency (VISA) (OPT/CPT)
E9	Transportation Security Administration
F14	Travelers Insurance
P3	True Friends (OPT/CPT)
G15	TruStone Financial Credit Union
N3	TurnKey Corrections
A5	Uline (OPT/CPT)
P12	UnitedHealth Group
C4	Urban Servant Corps (OPT/CPT)
P14	Valmark Financial Group
C12	VerticalXchange
H2	Viking Electric
J15	Walser Automotive Group
P7	Washington Conservation District (OPT/CPT)
G14	Wells Fargo
D1	Wilderness Inquiry (OPT/CPT)
H12	Wildlife Rehabilitation Center of Minnesota (OPT/CPT)
F16	Window Concepts of MN
J12	Winona Health
A16	Xcel Energy (VISA) (OPT/CPT)
A9	Youth Frontiers

**(VISA):** Would sponsor a work visa for the right candidate.  
**(OPT/CPT):** Willing to hire candidates under OPT/CPT.